

HETEROJUNCTION
TECHNOLOGY

QUANTUM MODULES

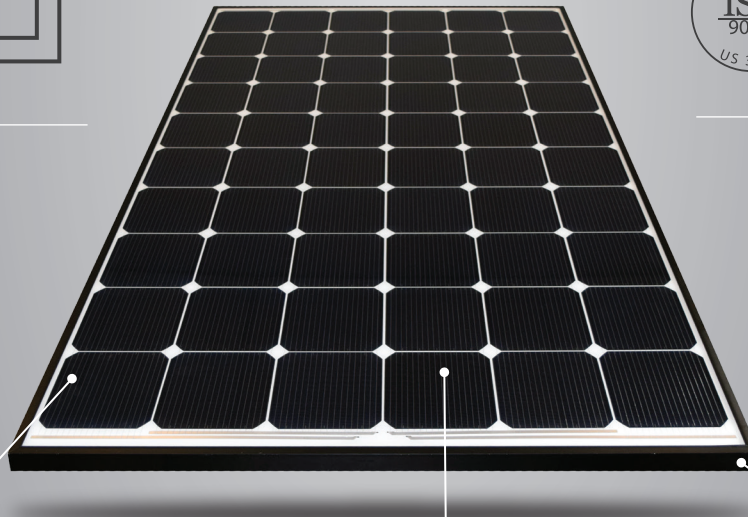
325
Watt



CERTIFICATIONS:
IEC61215
IEC61730
UL1703
Conformity to CE
*Certification Due Q4 2017



12
Year
Product



30
Year
Performance

SmartWire Technology lessens the effects of micro-fractures and shading

Heterojunction Busbar-less cells

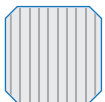
Anodized aluminum frame (Space Black or Metallic Silver)

SMART FEATURES



Superior Energy Production

Module efficiency up to **20.2%** achieved by utilizing the most advanced technology in the solar industry.



SmartWire Technology (SWT)

The revolutionary process for connecting solar cells that outrivals busbars by spreading the electric current through 18 micro-wires.



Advanced HJT Technology

This cell combines the advantages of N-type crystalline silicon with the excellent absorption and passivation of amorphous silicon.



Exceptional at Low-Light Conditions

The round shape of SmartWire reduces shading by 25% and introduces a light trapping effect.



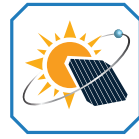
Remarkable Connection Durability

SWT acts as a protective layer for the solar cell, ensuring reliable contact points for decades of consistent performance.

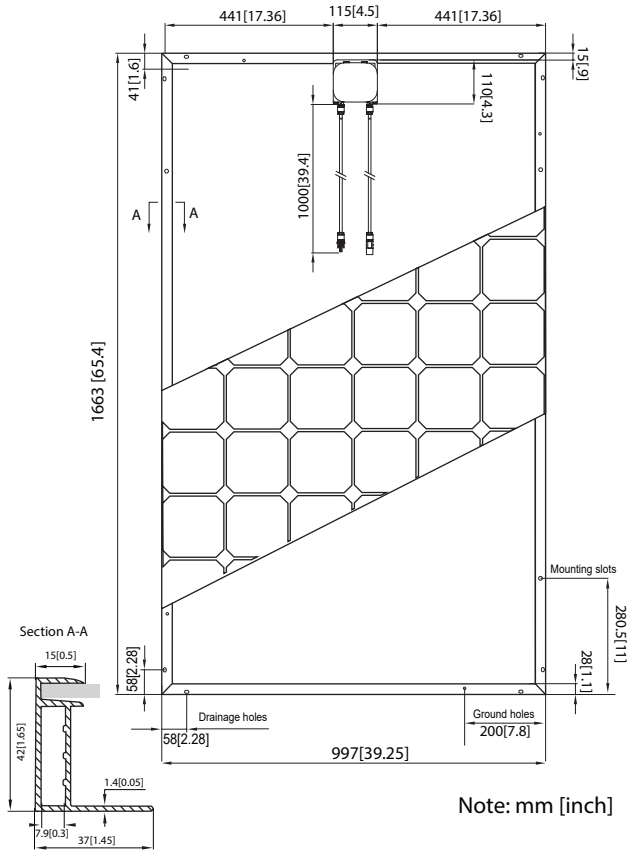


Industry Leading Warranty

HJT technology, based on n-type silicon, is immune to PID & LID effect.



SOLARTECH
UNIVERSAL



Note: mm [inch]

Electrical Characteristics STC

	Quantum Series 320 HJT	Quantum Series 325 HJT	Quantum Series 330 HJT
Average Power	320W	325W	330W
Module Efficiency (%)	19.6%	19.9%	20.2%
Voltage at Max power (Vmp)	36.7V	37.0V	37.3V
Current at Max power (Imp)	8.7A	8.8A	8.9A
Open Circuit Voltage (Voc)	44.6V	44.9V	45.3V
Short Circuit Current (Isc)	9.3A	9.3A	9.4A
Operating Module Temperature	-40°C to 85°C		
Maximum System Voltage	1000V DC (IEC + UL)		
Maximum Series Fuse Rating	20A		
Power Sorting	-0/+5W		

STC: Irradiance 1000 W/m2, module temperature 25 °C, AM=1.5; Best in Class AAA solar simulator (IEC 60904-9) used, power measurement uncertainty is within +/- 3%

Temperature Characteristics

Temperature Coefficient of Pmax	-0.3439%/°C
Temperature Coefficient of Voc	-0.2596%/°C
Temperature Coefficient of Isc	+0.0447 %/°C

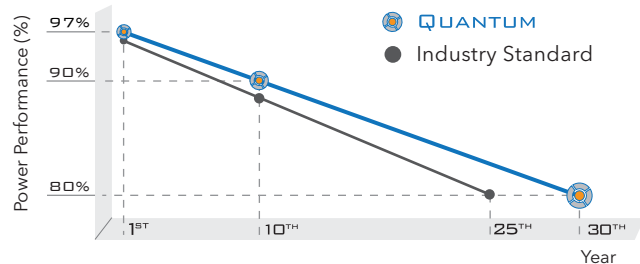
Maximum Power at PTC

291.5W	296.1W	300.6W
--------	--------	--------

Mechanical Characteristics

Laminate Structure	Glass / TPO / Cells / TPO / Backsheet
Weight	Approx. 18 kg [40lbs]
Cell Type [mm]	156.75 x 156.75 Heterojunction
Cell connection	60 cells (serial)
Junction Box (Electrical)	3 bypass (Tyco) IP65/IP67
Connection Cable (Electrical)	Tyco Solar 4mm ² (1m length each)
Electrical Connectors	Tyco PV4
Dimensions	997 x 1663 x 42mm [39.25 x 65.4 x 1.65]
Encapsulant	(TPO) Hydrophobic
Front Load (Snow)	5400 Pa / 112.8 Psf
Rear Load (Wind)	3800 Pa / 79.4 Psf
Collection Pathways	18 Micro-wires
Glass Thickness	3.2mm [125] Anti-reflective tempered solar glass (94% Transmittance)

Warrantied Power Performance



Packing Configuration

Equipment	20' GP	53' Trailer
Modules per pallet	20	23
Pallets per unit	12	36
Modules per unit	240	828

1800 President Barack Obama Highway
Riviera Beach, FL 33404

Phone: (561) 440-8000
Fax: (561) 503-4141

info@solartechuniversal.com
www.solartechuniversal.com

